

# SIRUBA®

銀箭牌工業用縫紉機  
INDUSTRIAL SEWING MACHINE

# 700HD

## 零件圖 PARTS LIST



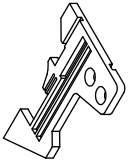
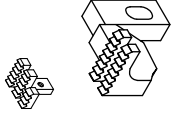
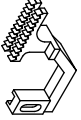







CE

 高林股份有限公司  
KAULIN MFG. CO., LTD.

機 型 MODEL	針板 NEEDLE PLATE	送 具 FEED DOG	送 具 FEED DOG	送 具 FEED DOG	押 具 PRESSER FOOT	勾 針 LOOPER	針座 NEEDLE CLAMP	束 子 COLLAR	衝 程 CRANK	衝 程 CRANK	衝 程 CRANK	針 號 NEEDLE
737HD-504M1-15	E934D	D438	D912	H442	P152D-2	LP26	KG231-E	KJ10F	KF87-A	KJ09B-E	KF87-A	DC27 #9
737HD-504M2-04	E800	D440	D095	H445	P253E-3	LP26	KG231-E	KJ10F	KF87-A	KJ09B-E	KF87-A	DC27 #11
737HD-504M2-04CT	E800C	D440	D095	H445	P253E-3	LP26	KG231-E	KJ10F	KF87-A	KJ09B-E	KF87-A	DC27 #11
737HD-504M2-04TR	E011	D015	D011	H445	P101-3	LP26	KG231-E	KJ10F	KF87-A	KJ09B-E	KF87-A	DC27 #11
737HD-504M2-04VT	E800	D440	D095	H445	P253E-3	LP26	KG231-E	KJ10F	KF87-A	KJ09B-E	KF87-A	DC27 #11
737HD-504M3-05PZ	E797	D440	D674	H445	PZ01-A	LP26	KG231-E	KJ10F	KF87-A	KJ09B-E	KF87-A	DC27 #18
737HD-504M3-05	E797	D440	D674	H445	P230-3	LP26	KG231-E	KJ10F	KF87-A	KJ09B-E	KF87-A	DC27 #11
737HD-504M3-05CT	E797C	D440	D674	H445	P230-3	LP26	KG231-E	KJ10F	KF87-A	KJ09B-E	KF87-A	DC27 #11
737HD-504M3-05VT	E797	D440	D674	H445	P230-3	LP26	KG231-E	KJ10F	KF87-A	KJ09B-E	KF87-A	DC27 #11
737HD-504M5-04BK	E589F	D969	D675	H974	P975-3	LP26	KG231-E	KJ10F	KF87-A	KJ09B-E	KF87-A	DC27 #11
737HD-504M5-04BK/VT	E589F	D969	D675	H974	P975-3	LP26	KG231-E	KJ10F	KF87-A	KJ09B-E	KF87-A	DC27 #11
737HD-505F1-04	E784	D438	D674	H442	P152D-3	LP26	KG231-E	KJ10F	KF87-A	KJ09B-E	KF87-A	DC27 #9
737HD-505F1-04ES	E784	D438	D674	H442	P152D-3	LP26	KG231-E	KJ10F	KF87-A	KJ09B-E	KF87-A	DC27 #9
737HD-505F1-04VT	E784	D438	D674	H442	P152D-3	LP26	KG231-E	KJ10F	KF87-A	KJ09B-E	KF87-A	DC27 #9
737HD-504M3-04	E796	D440	D674	H445	P230-3	LP26	KG231-E	KJ10F	KF87-A	KJ09B-E	KF87-A	DC27 #11
737HD-505F1-04ES/VT	E784	D438	D674	H442	P152D-3	LP26	KG231-E	KJ10F	KF87-A	KJ09B-E	KF87-A	DC27 #9
737HD-504M2-04EC	E800C	D440	D095	H445	P253E-3	LP26	KG231-E	KJ10F	KF87-A	KJ09B-E	KF87-A	DC27 #11
737HD-504M1-15VT	E934D	D438	D912	H442	P152D-5	LP26	KG231-E	KJ10F	KF87-A	KJ09B-E	KF87-A	DC27 #9
737HD-504M2-04TR/EC	E011C	D011	D015	H445	P101-3	LP26	KG231-E	KJ10F	KF87-A	KJ09B-E	KF87-A	DC27 #11
737HD-504F1-04	E784	D438	D674	H442	P152D-3	LP26	KG231-E	KJ10F	KF87-A	KJ09B-E	KF87-A	DC27 #9
747HD-512M1-25	E920	D440	D095	H445	P253E-4	LP36	KG242-E	KJ13F	KF86-A	KJ11B-E	KF86-A	DC27 #11*2
747HD-512M1-25CT	E920C	D440	D095	H445	P253E-4	LP36	KG242-E	KJ13F	KF86-A	KJ11B-E	KF86-A	DC27 #11*2
747HD-514H4-24GA	E919	D958	D095	H959	P136-A	LP26	KG242-E	KJ13F	KF86-A	KJ11B-E	KF86-A	DC27 #11*2

規格件表 CONVERSION CHART-1/4

# 規格件表 CONVERSION CHART-2/4

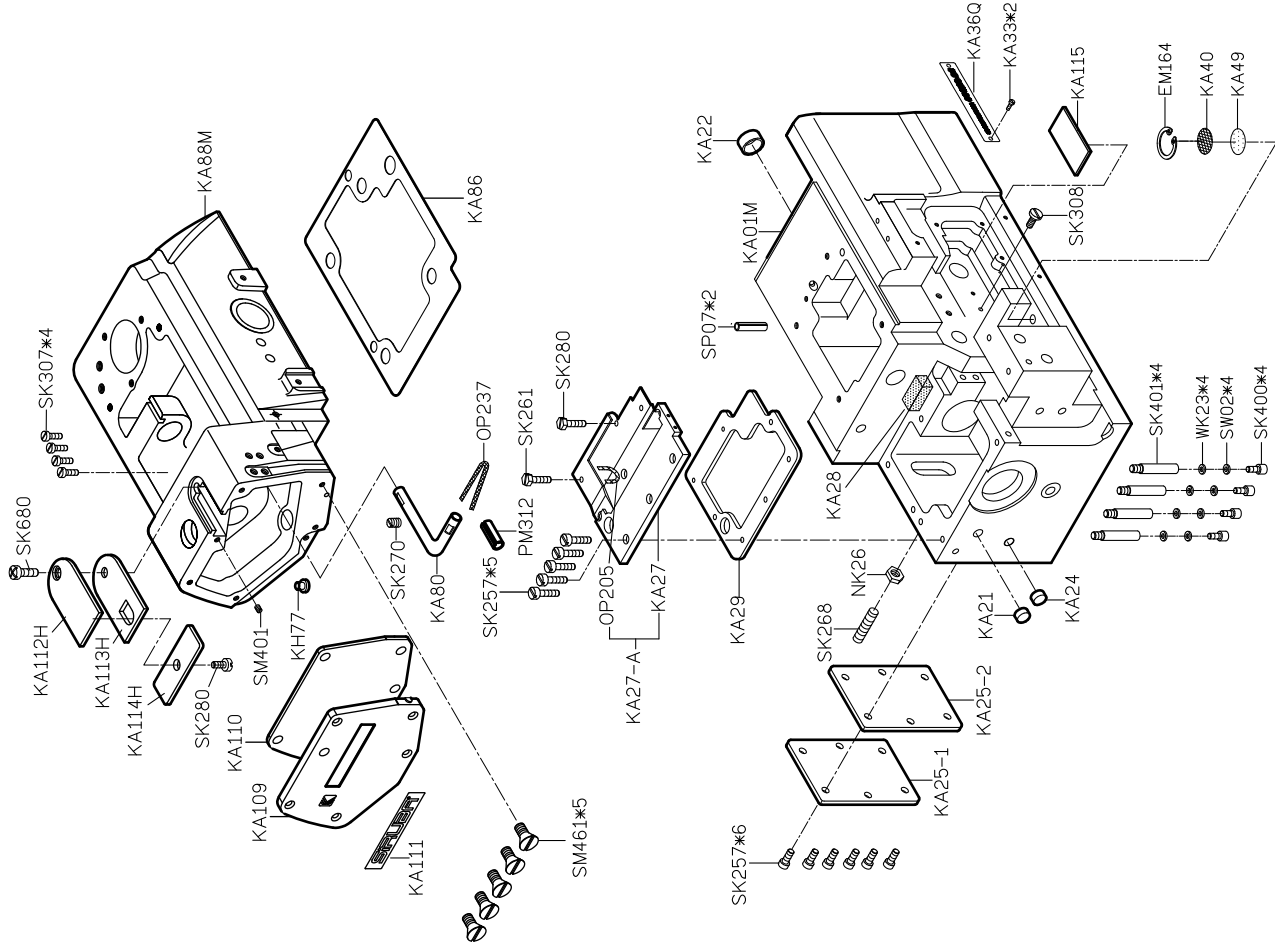
機 型 MODEL										
	針板 NEEDLE PLATE	送具 FEED DOG	送具 FEED DOG	押具 PRESSER FOOT	勾 針 LOOPER	針座 NEEDLE CLAMP	束 子 COLLAR	衝 程 CRANK	衝 程 CRANK	針 號 NEEDLE
747HD-514H4-24GA/CT	E919C	D958	D095	P136-A	LP26	KG242-E	KJ13F	KF86-A	KJ11B-E	DC27 #11*2
747HD-514H4-24GA/EC	E919C	D958	D095	P136-A	LP26	KG242-E	KJ13F	KF86-A	KJ11B-E	DC27 #11*2
747HD-514H4-24GA/P	E919	D958	D095	P136P-A	LP26	KG242-E	KJ13F	KF86-A	KJ11B-E	DC27 #11*2
747HD-514M2-24	E919	D440	D095	P253E-4	LP26	KG242-E	KJ13F	KF86-A	KJ11B-E	DC27 #11*2
747HD-514M2-24CT	E919C	D440	D095	P253E-4	LP26	KG242-E	KJ13F	KF86-A	KJ11B-E	DC27 #11*2
747HD-514M2-24EC	E919C	D440	D095	P253E-4	LP26	KG242-E	KJ13F	KF86-A	KJ11B-E	DC27 #11*2
747HD-514M2-24TG	E919	D440	D095	P254G-4	LP26	KG242-E	KJ13F	KF86-A	KJ11B-E	DC27 #11*2
747HD-514M2-24TG/EC	E919C	D440	D095	P254G-4	LP26	KG242-E	KJ13F	KF86-A	KJ11B-E	DC27 #11*2
747HD-514M2-24VT	E810C	D440	D095	P253E-4	LP26	KG242-E	KJ13F	KF86-A	KJ11B-E	DC27 #11*2
747HD-514M2-25TG	E920	D440	D095	P253G-4	LP26	KG242-E	KJ13F	KF86-A	KJ11B-E	DC27 #11*2
747HD-514M2-25	E920C	D440	D095	P253E-4	LP26	KG242-E	KJ13F	KF86-A	KJ11B-E	DC27 #11*2
747HD-514M2-25CT	E920C	D440	D095	P253E-4	LP26	KG242-E	KJ13F	KF86-A	KJ11B-E	DC27 #11*2
747HD-514M4-23	E804	D440	D674	P230-A	LP26	KG242-E	KJ13F	KF87-A	KJ11B-E	DC27 #11*2
747HD-514M4-23CT	E804C	D440	D674	P230-A	LP26	KG242-E	KJ13F	KF87-A	KJ11B-E	DC27 #11*2
747HD-514M5-23BK	E591B	D969	D657	P975-4	LP26	KG242-E	KJ13F	KF86-A	KJ11B-E	DC27 #11*2
747HD-514M7-23	E804A	D441	D674	P230-A	LP38	KG242-E	KJ13F	KF86-A	KJ11B-E	DC27 #16*2
747HD-514M7-23CT	E804AC	D441	D674	P230-A	LP38	KG242-E	KJ13F	KF86-A	KJ11B-E	DC27 #11*2
747HD-514M7-24	E919A	D441	D095	P253E-4	LP38	KG242-E	KJ13F	KF86-A	KJ11B-E	DC27 #16*2
747HD-514M7-24CT	E919AC	D441	D095	P253E-4	LP38	KG242-E	KJ13F	KF86-A	KJ11B-E	DC27 #16*2
747HD-514M7-25	E920A	D441	D095	P253E-4	LP38	KG242-E	KJ13F	KF86-A	KJ11B-E	DC27 #16*2
747HD-514M7-25CT	E920AC	D441	D095	P253E-4	LP38	KG242-E	KJ13F	KF86-A	KJ11B-E	DC27 #16*2
747HD-514M7-24TG	E919A	D441	D095	P254G-4	LP38	KG242-E	KJ13F	KF86-A	KJ11B-E	DC27 #16*2
747HD-514M7-25TG	E920A	D441	D095	P254G-4	LP38	KG242-E	KJ13F	KF86-A	KJ11B-E	DC27 #16*2

機 型 MODEL	針板 NEEDLE PLATE	送 具 FEED DOG	送 具 FEED DOG	送 具 FEED DOG	押 具 PRESSER FOOT	勾 針 LOOPER	針座 NEEDLE CLAMP	束 子 COLLAR	衝 程 CRANK	衝 程 CRANK	衝 程 CRANK	針 號 NEEDLE
747HD-514F1-24	E990	D438	D674	H442	P152D-4	LP26	KG242-E	KJ13F	KF86-A	KJ11B-E	KF86-A	DC27 #11*2
747HD-514M5-23BK/VT	E591B	D675	D969	H974	P975-4	LP26	KG242-E	KJ13F	KF86-A	KJ11B-E	KF86-A	DC27 #11*2
747HD-512M1-34	E832	D440	D095	H447	P253E-A	LP36	KG243-E	KJ13F	KF86-A	KJ11B-E	KF86-A	DC27 #14*2
757HD-401M1/TW	E110			H101	P767-A	LP26	KG253-E		KF86-A		KF86-A	DC27 #14*2
757HD-401M2-50TA	E005	D005	D006	H005	P005-A		TA255-E		KF86-A		KF86-A	DC27 #14*2
757HD-401M2-50TA/EC	E005C	D005	D006	H005	P005-A		TA255-E		KF86-A		KF86-A	DC27 #14*2
757HD-516H4-35GA	E982	D008	D502	H957	P508-A	LP26	KG253-E	KJ10F	KF87-A	KJ09B-E	KF87-A	DC27 #14*2
757HD-516H4-35GA/EC	E982C	D008	D502	H957	P508-A	LP26	KG253-E	KJ10F	KF87-A	KJ09B-E	KF87-A	DC27 #14*2
757HD-516H4-35GA/P	E982	D008	D502	H957	P508P-A	LP26	KG253-E	KJ10F	KF87-A	KJ09B-E	KF87-A	DC27 #14*2
757HD-516H4-35GA/P/EC	E982C	D008	D502	H957	P508P-A	LP26	KG253-E	KJ10F	KF87-A	KJ09B-E	KF87-A	DC27 #14*2
757HD-516H4-55GA	E986	D956	D502	H957	P509-A	LP26	KG255-E	KJ10F	KF87-A	KJ09B-E	KF87-A	DC27 #14*2
757HD-516H4-55GA/EC	E986C	D956	D502	H957	P509-A	LP26	KG255-E	KJ10F	KF87-A	KJ09B-E	KF87-A	DC27 #14*2
757HD-516H4-55GA/P	E986	D956	D502	H957	P509P-A	LP26	KG255-E	KJ10F	KF87-A	KJ09B-E	KF87-A	DC27 #14*2
757HD-516H4-55GA/P/EC	E986C	D956	D502	H957	P509P-A	LP26	KG255-E	KJ10F	KF87-A	KJ09B-E	KF87-A	DC27 #14*2
757HD-516L1-24	E834	D487	D060	H492	P500-A	LP26	KG252-E	KJ10F	KF87-A	KJ09B-E	KF87-A	DC27 #14*2
757HD-516L1-24CT	E834C	D487	D060	H492	P500-A	LP26	KG252-E	KJ10F	KF87-A	KJ09B-E	KF87-A	DC27 #14*2
757HD-516L1-35	E839	D487	D060	H492	P504-A	LP26	KG253-E	KJ10F	KF87-A	KJ09B-E	KF87-A	DC27 #14*2
757HD-516L1-35CT	E839C	D487	D060	H492	P504-A	LP26	KG253-E	KJ10F	KF87-A	KJ09B-E	KF87-A	DC27 #14*2
757HD-516M2-35	E982	D489	D502	H497	P504-A	LP26	KG253-E	KJ10F	KF87-A	KJ11B-E	KF87-A	DC27 #14*2
757HD-516M2-35CT	E982C	D489	D502	H497	P504-A	LP26	KG253-E	KJ10F	KF87-A	KJ11B-E	KF87-A	DC27 #14*2
757HD-516M2-35PS	E982S	D489	D502	H497	P504S-A	LP26	KG253-E	KJ10F	KF87-A	KJ11B-E	KF87-A	DC27 #14*2
757HD-516M2-35PS/EC	E982SC	D489	D502	H497	P504S-A	LP26	KG253-E	KJ10F	KF87-A	KJ11B-E	KF87-A	DC27 #14*2
757HD-516M2-55	E986	D489	D502	H500	P502-A	LP26	KG255-E	KJ10F	KF87-A	KJ11B-E	KF87-A	DC27 #14*2

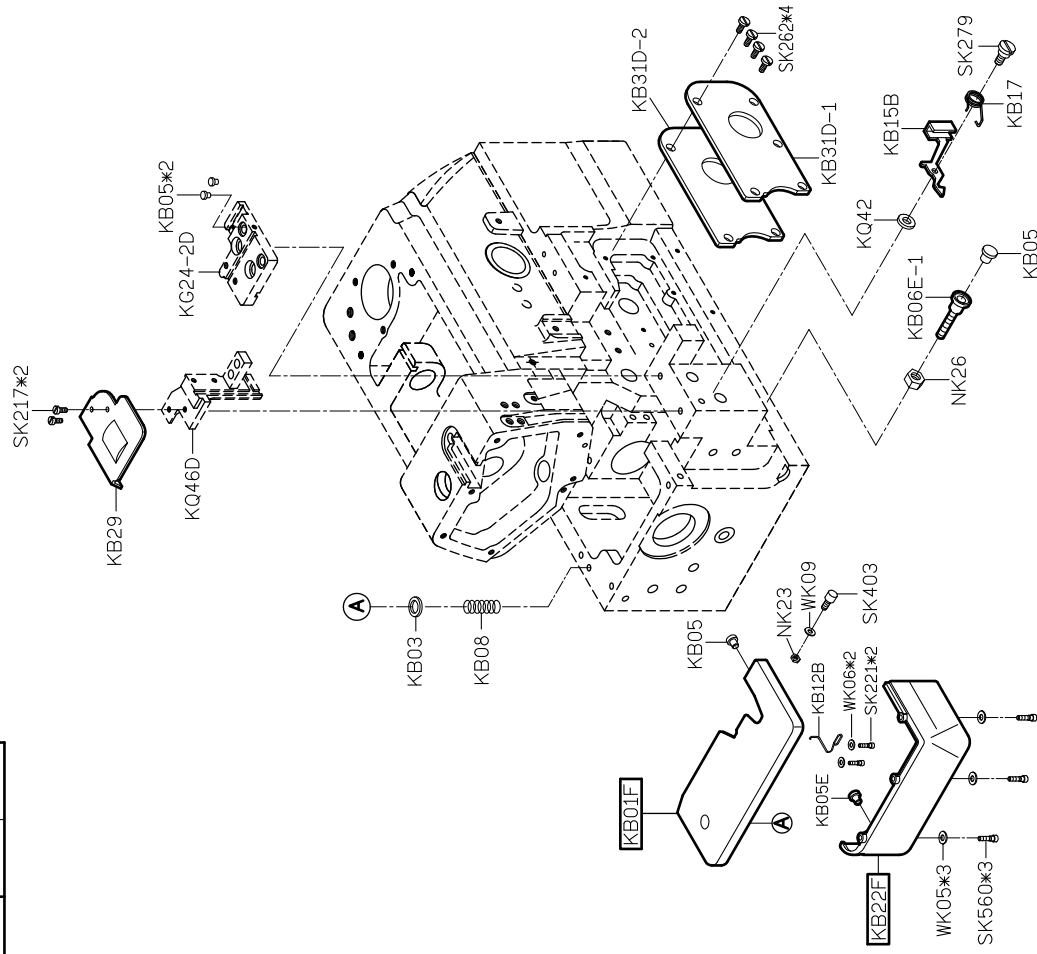
### 規格件表 CONVERSION CHART-3/4



MODEL	三四線車	五六線車
PARTS NO	KB01F KB22F	KB02F KB23F



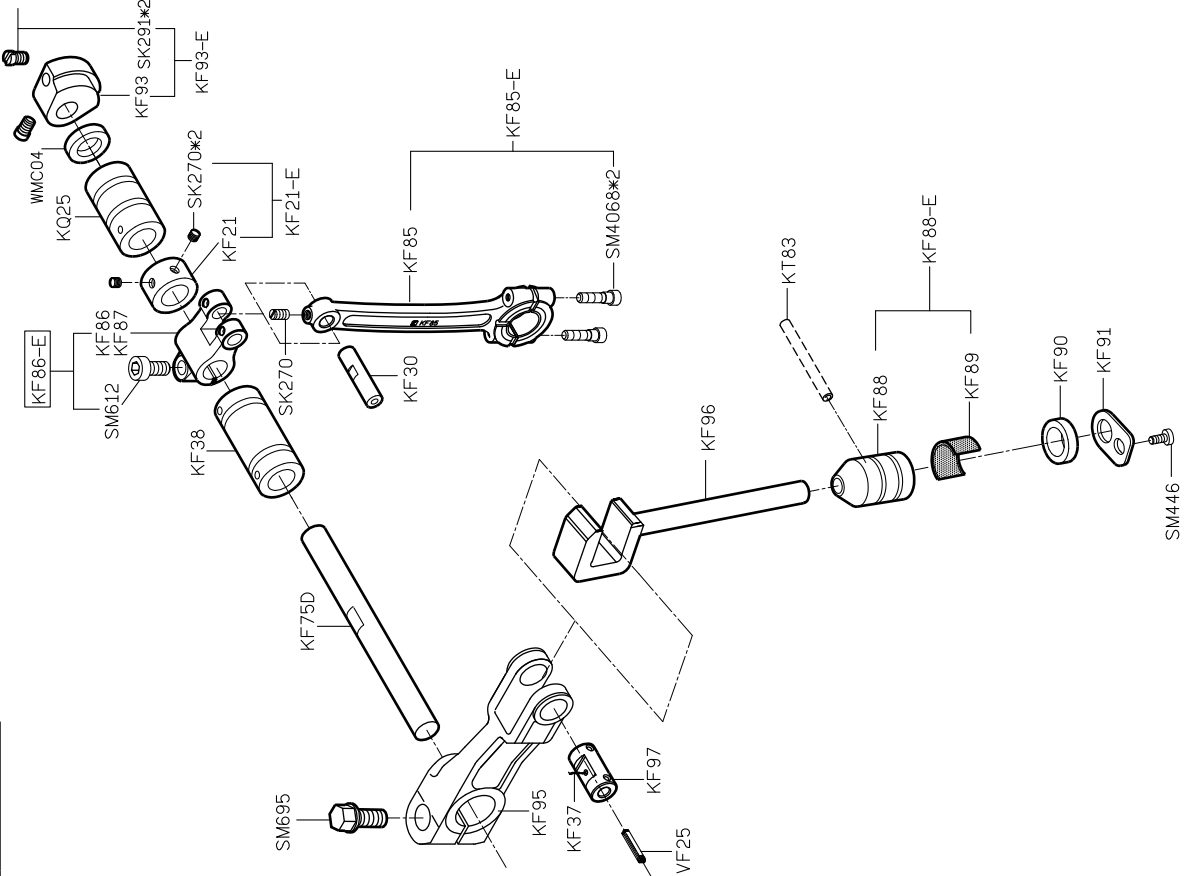
### PARTS LIST FOR KA GROUP



### PARTS LIST FOR KB GROUP

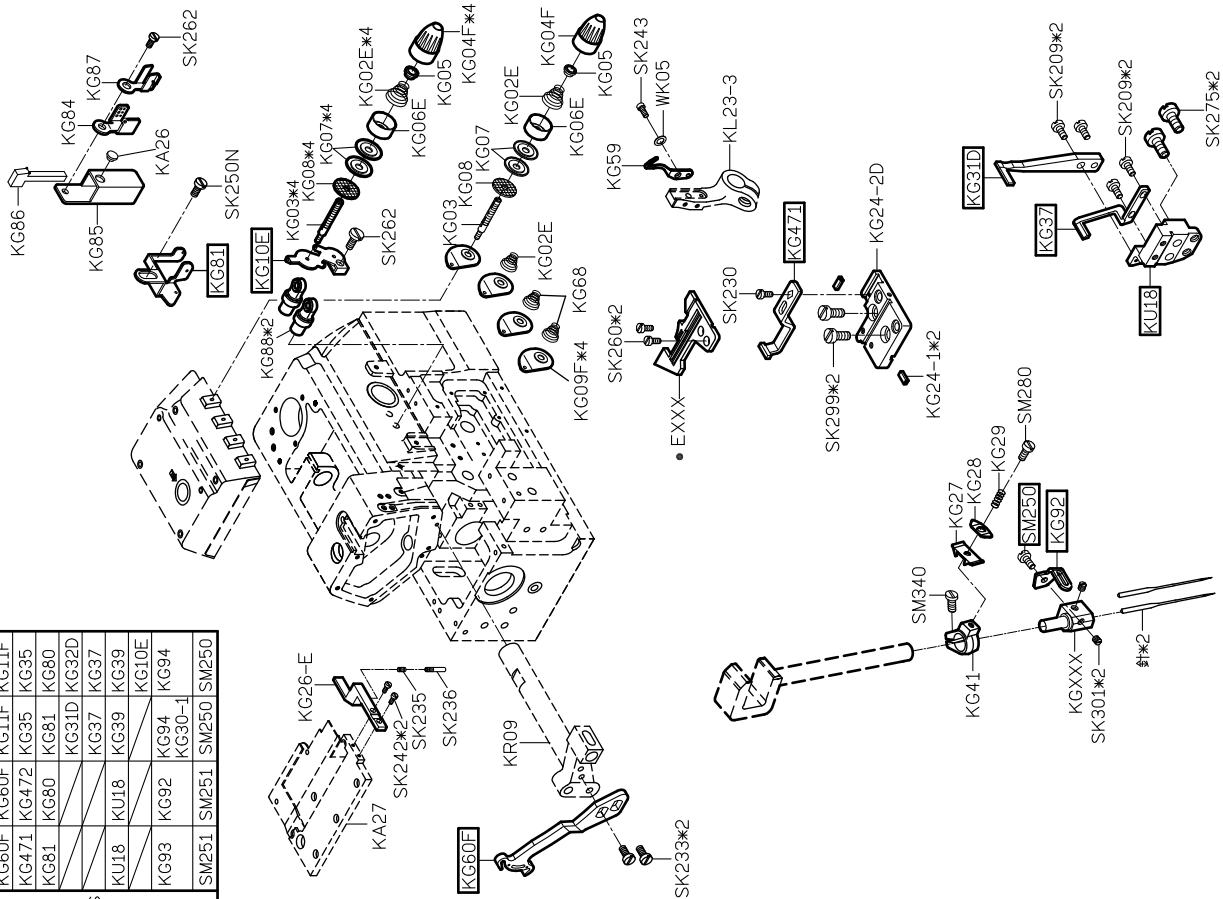


MODEL	STD	H1
PARTS NO.	KF87	KF86



PARTS LIST FOR KF GROUP

MODEL	三線車	四線車	五線車	六線車
PARTS NO.	KG60F	KG60F	KG11F	KG11F
	KG471	KG472	KG35	KG35
	KG81	KG80	KG81	KG80
	KG31D	KG32D	KG31D	KG32D
	KU18	KU18	KG37	KG37
	KG93	KG92	KG94	KG10E
	SM251	SM251	SM250	SM250



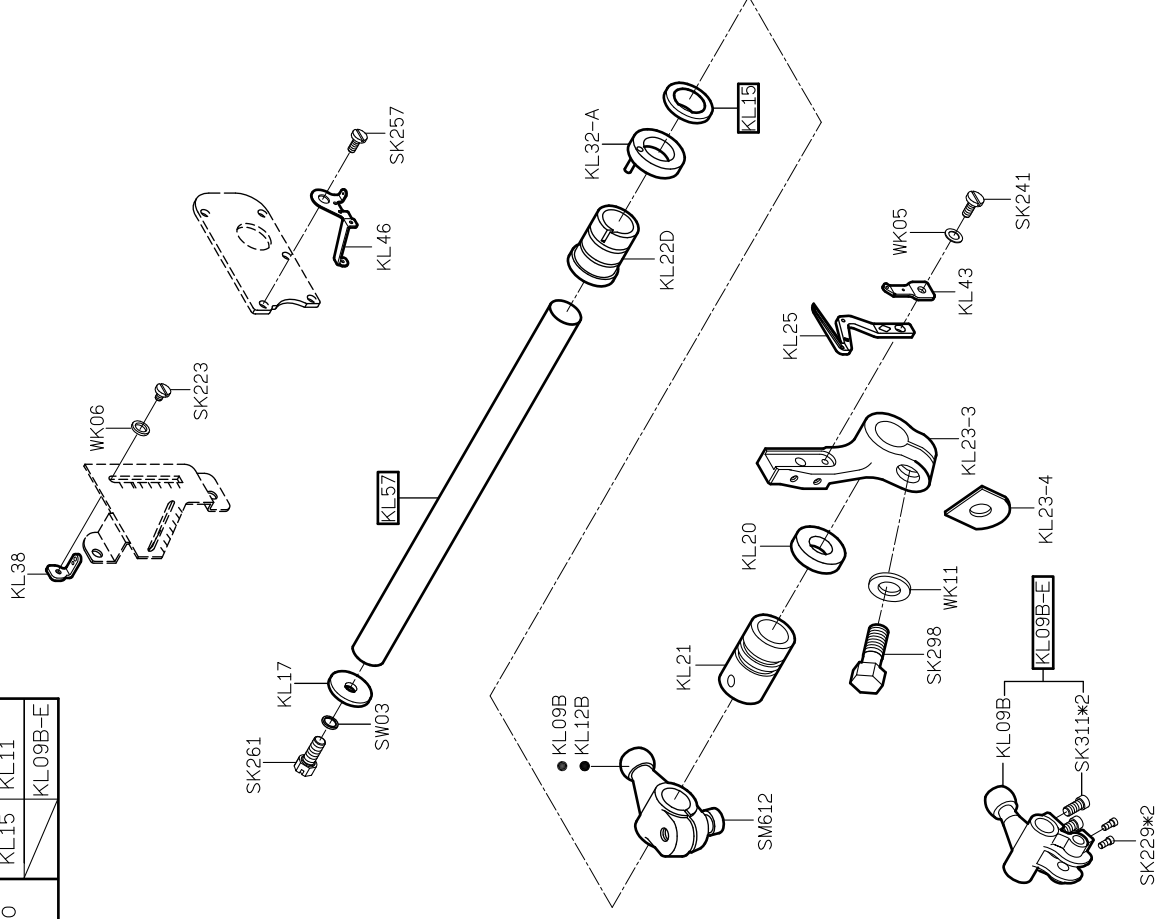
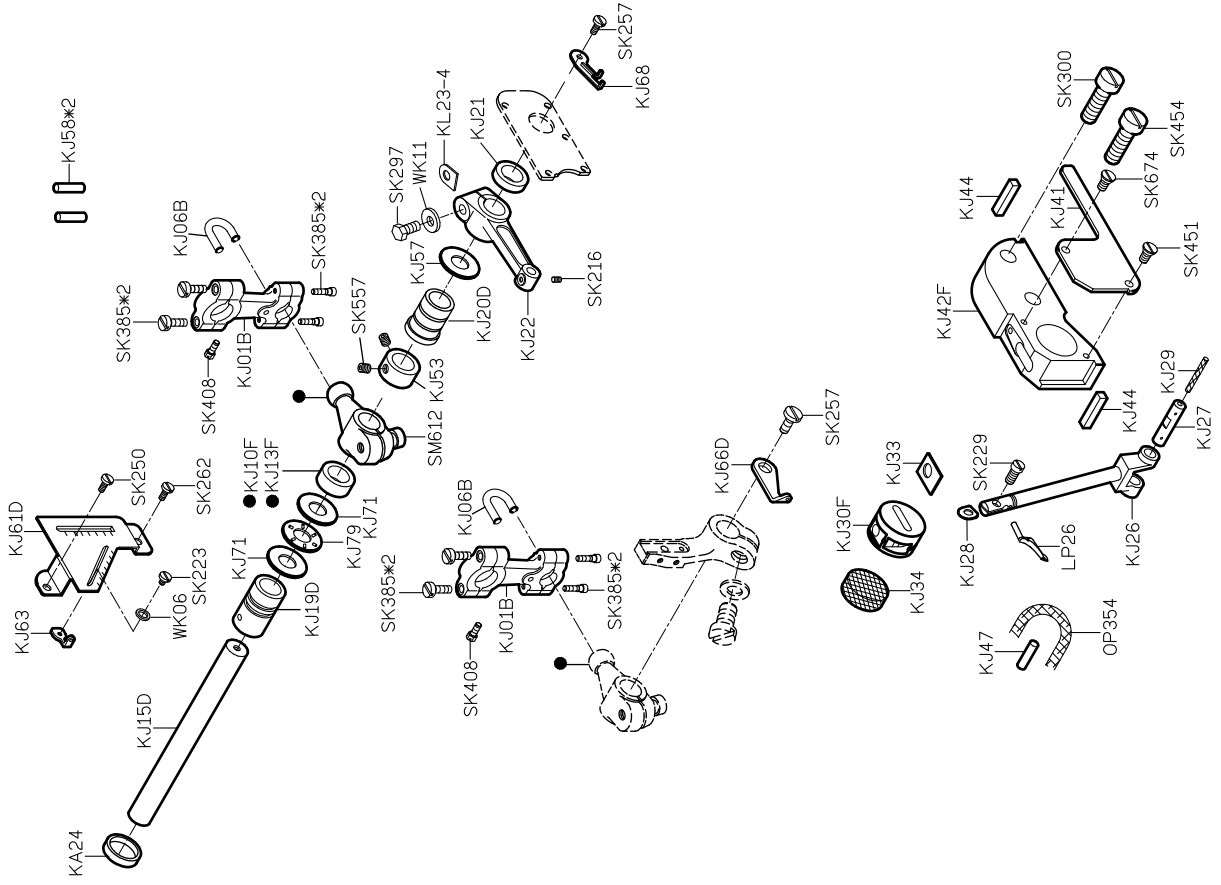
PARTS LIST FOR KG GROUP

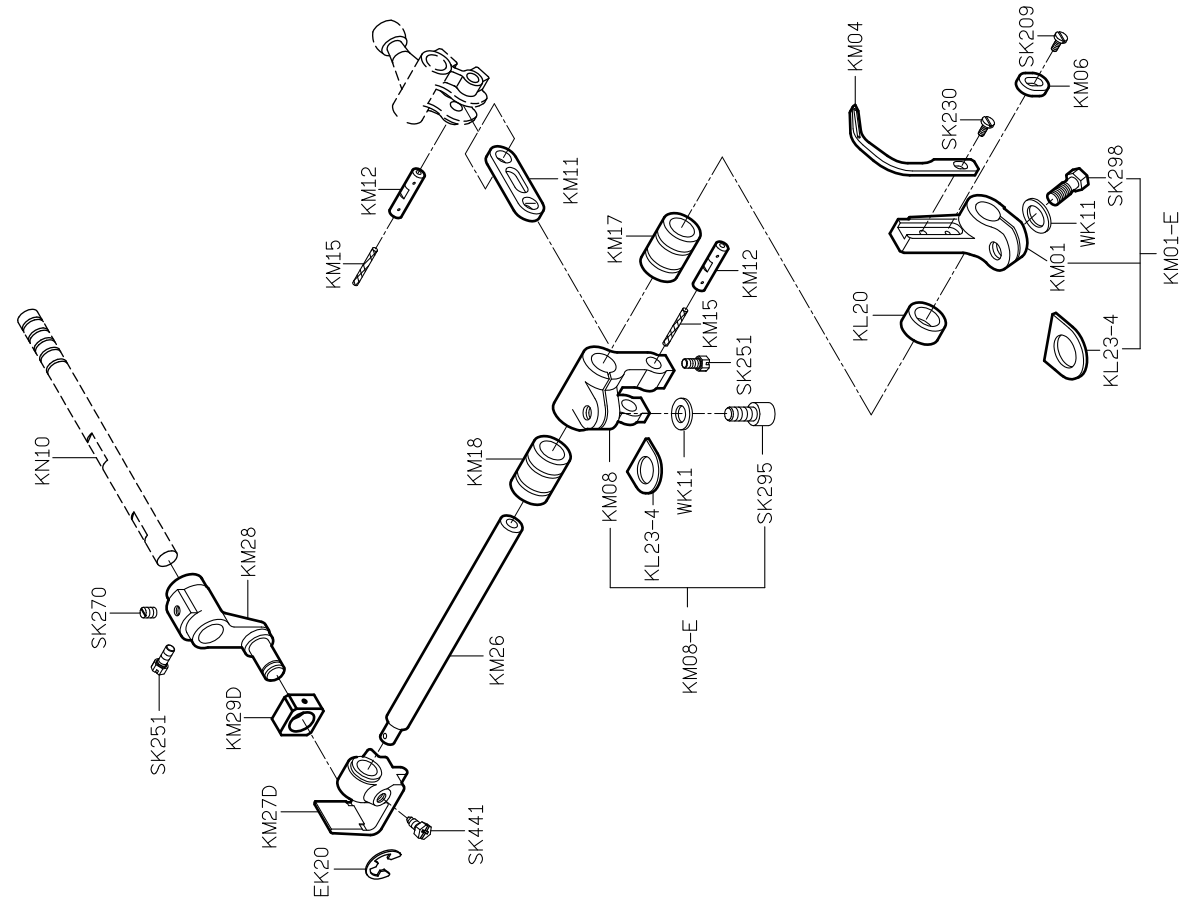
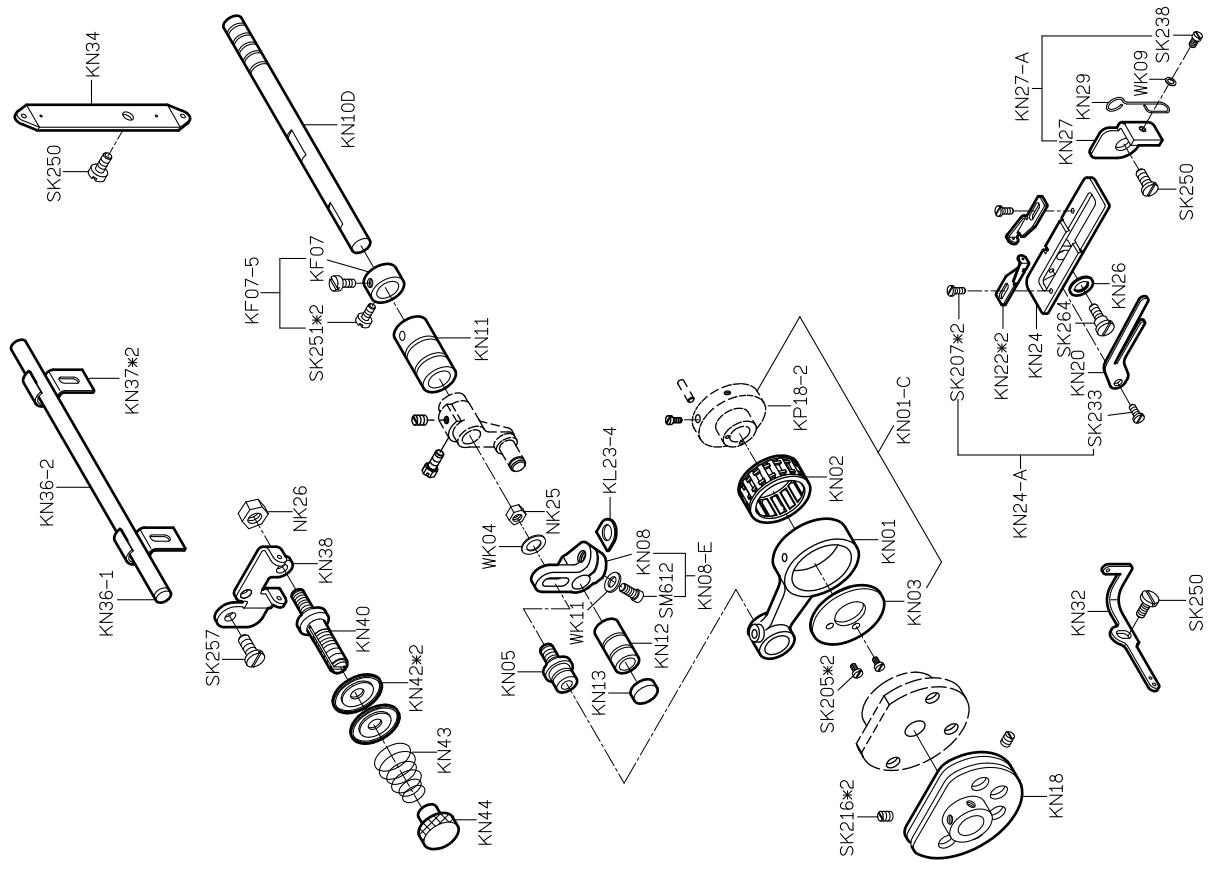


PARTS LIST FOR KJ GROUP

PARTS LIST FOR KL GROUP

MODEL	三四線車	五六線車
PARTS NO	KL57	KL16
	KL15	KL11
		KL09B-E



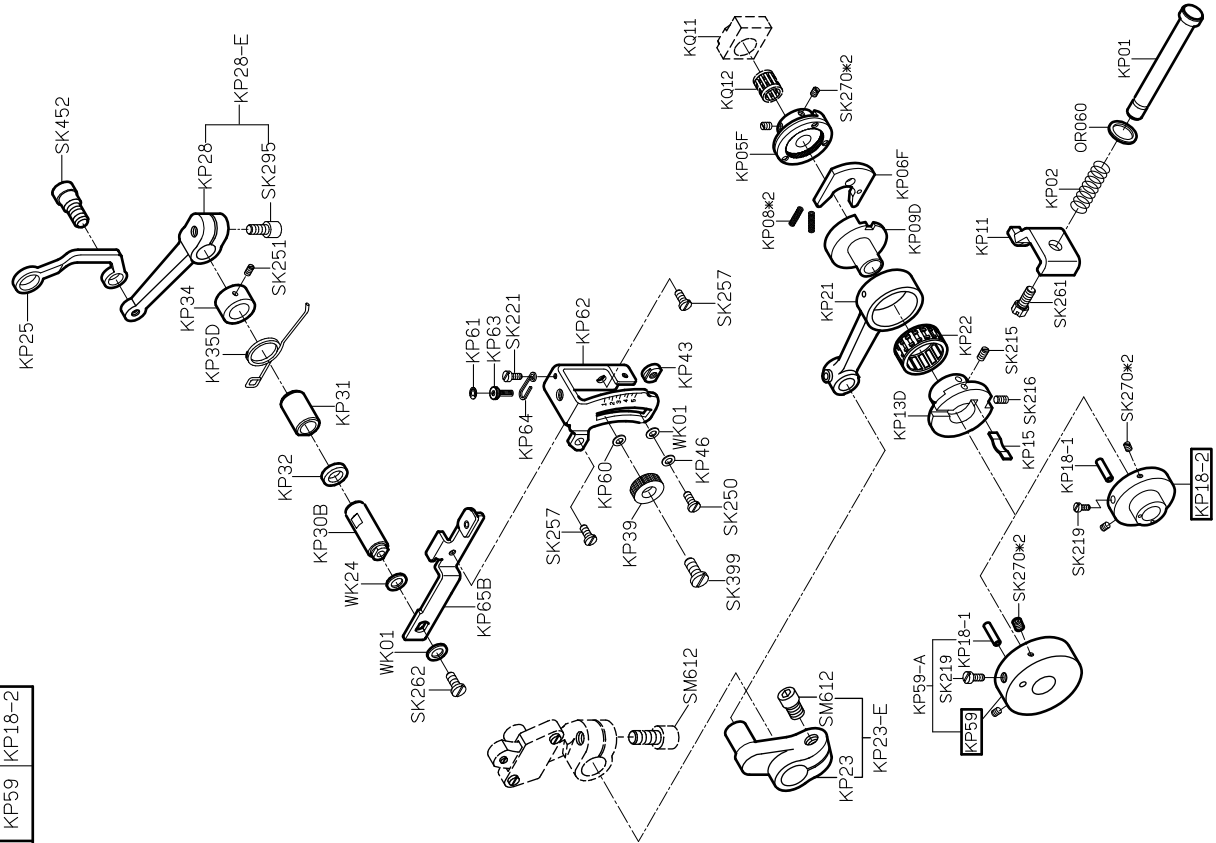


PARTS LIST FOR KN GROUP

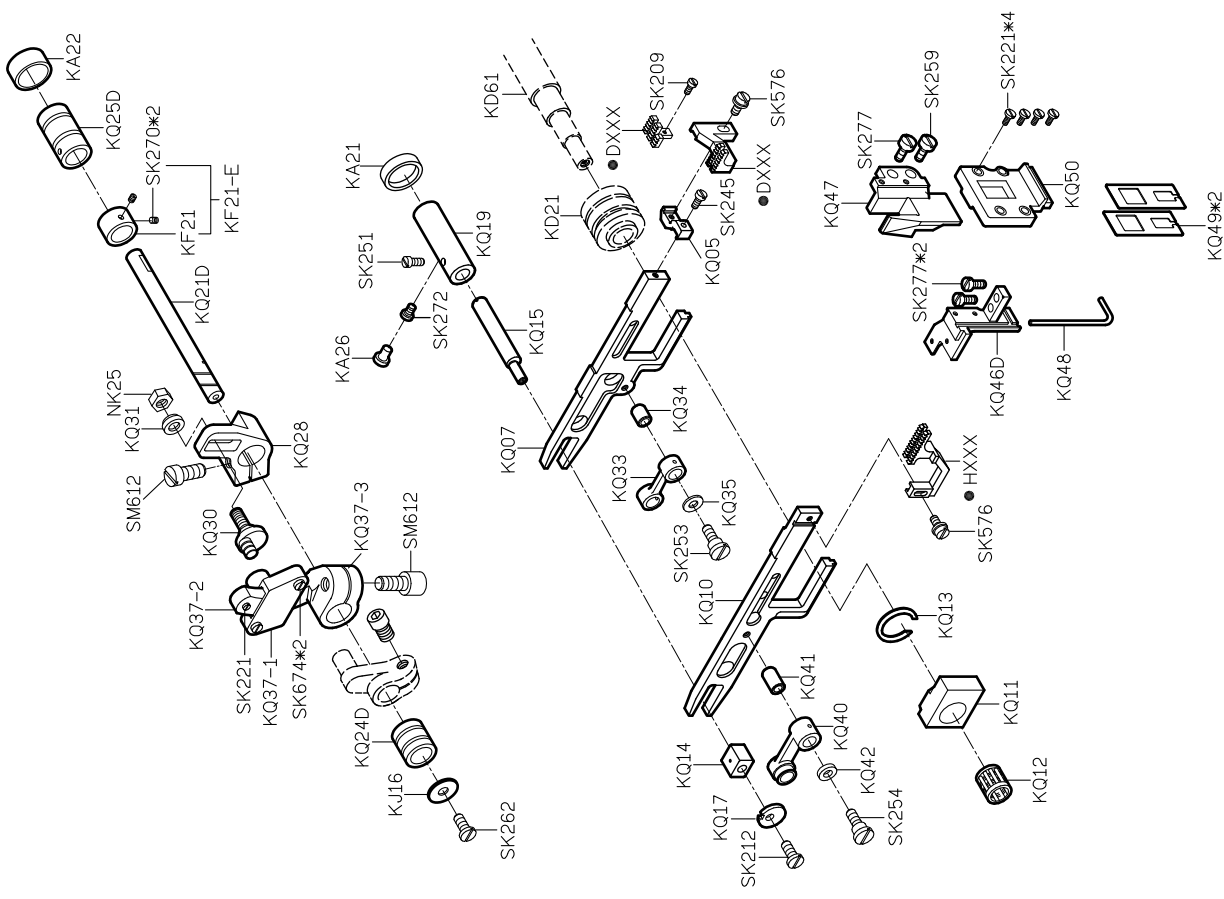
PARTS LIST FOR KM GROUP

# PARTS LIST FOR KP GROUP

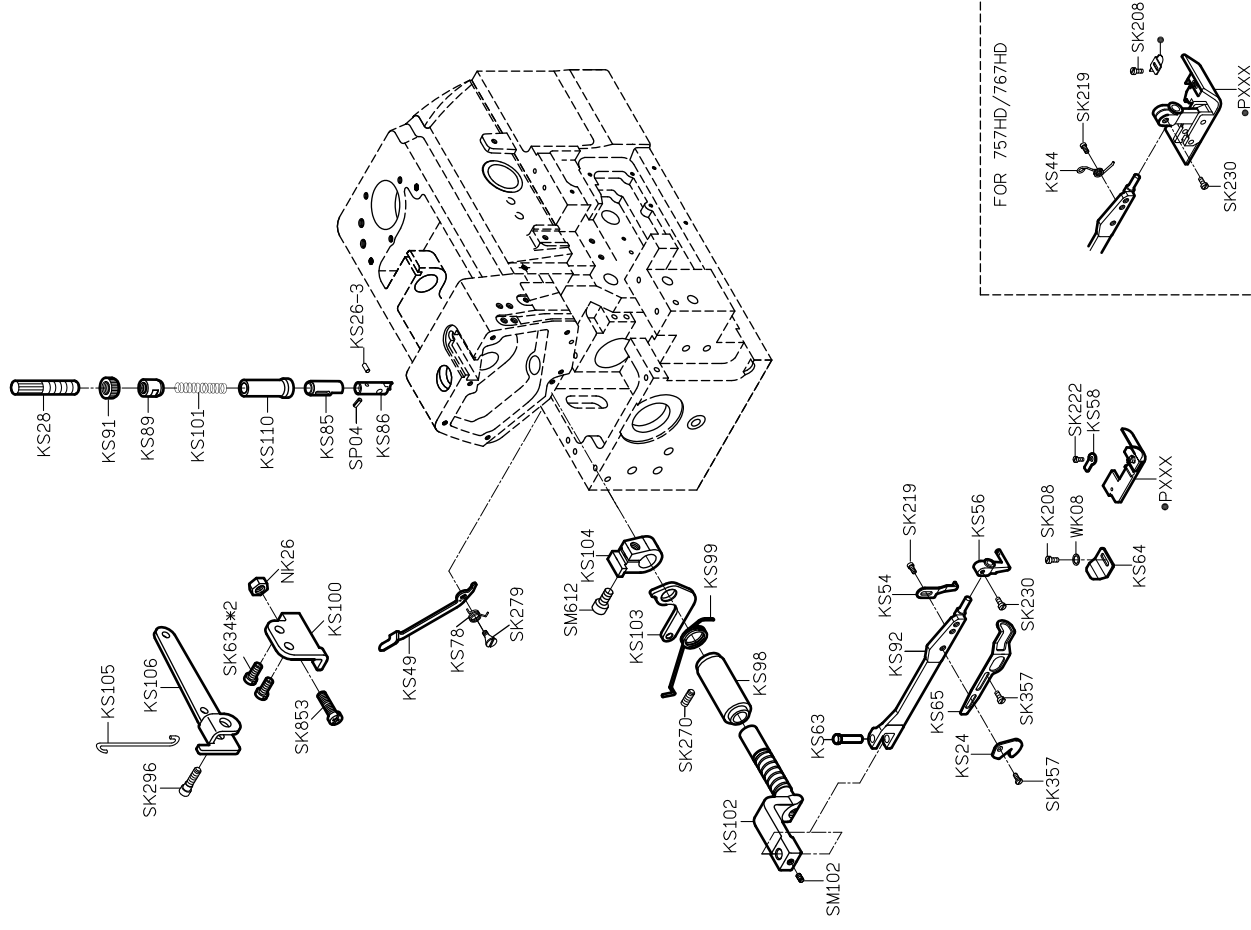
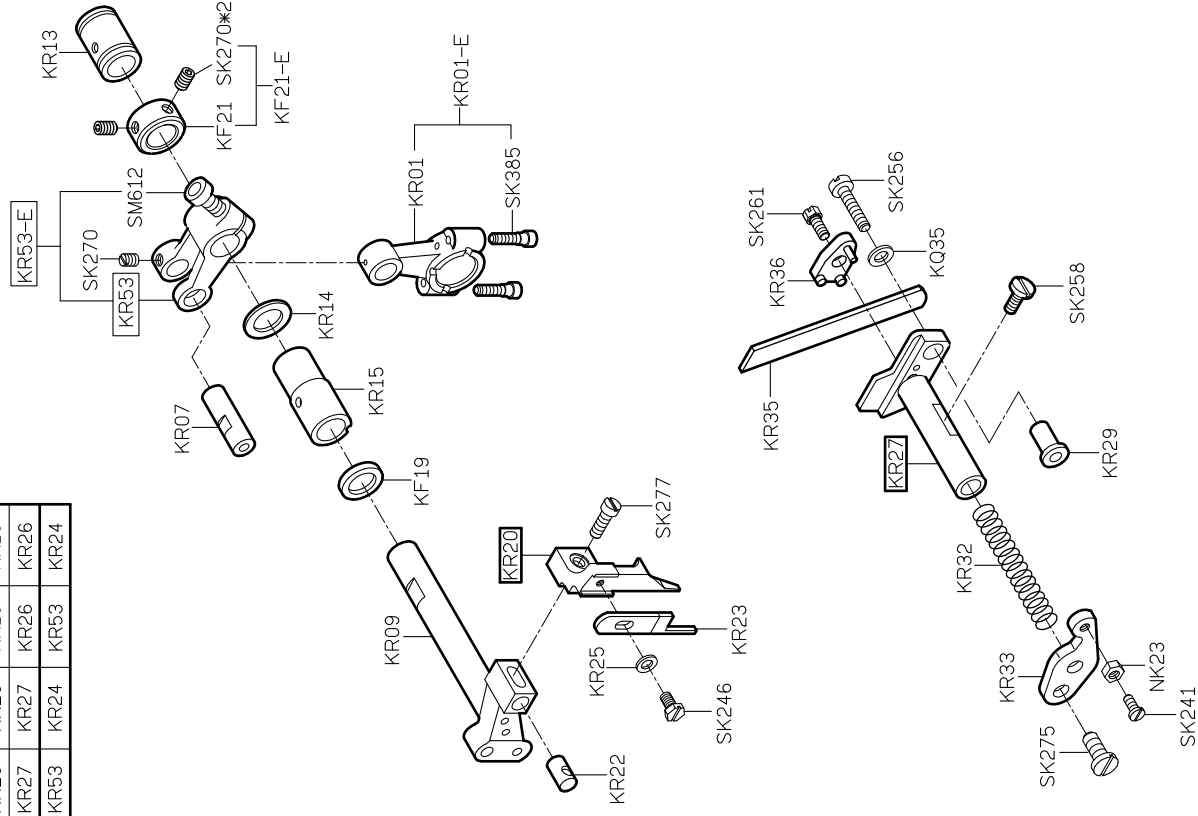
MODEL	三四線車	五六線車
PARTS NO.	KP59	KP18-2



# PARTS LIST FOR KQ GROUP



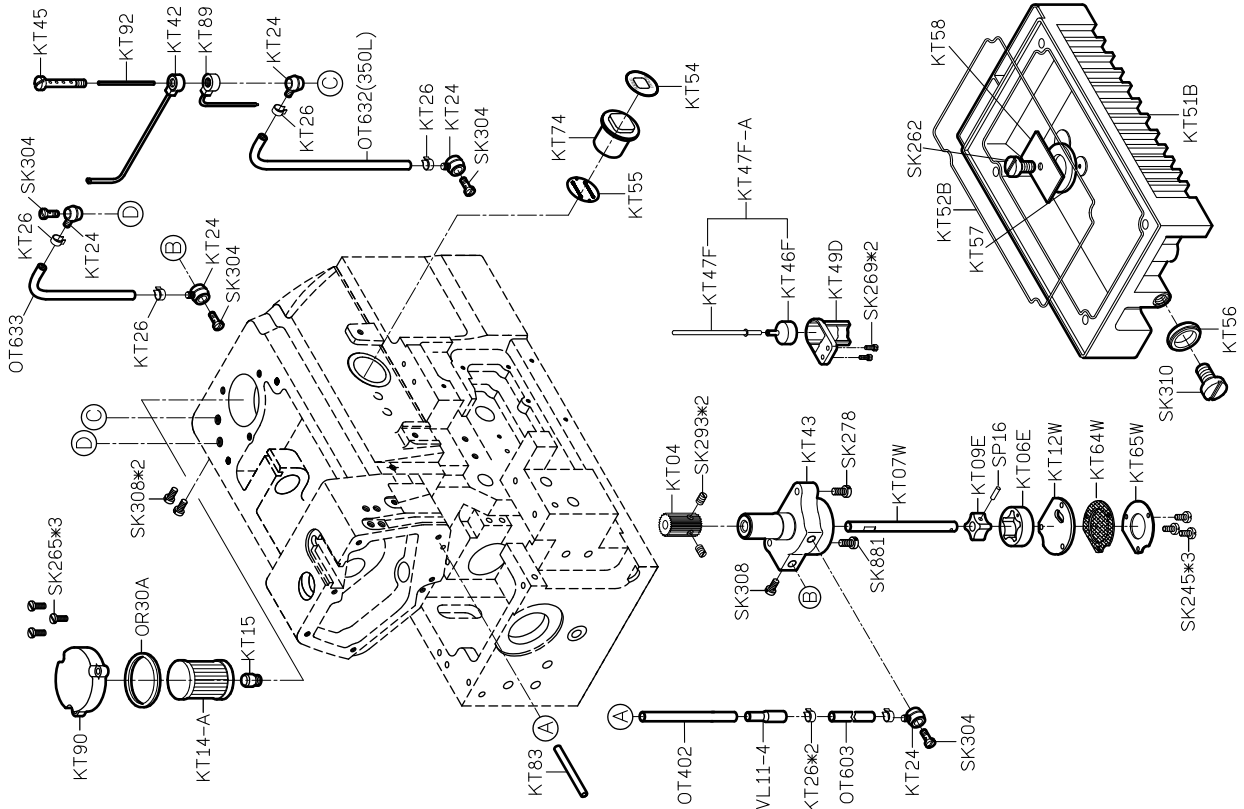
MODEL	三線車 / 四線車	五線車	六線車
PARTS NO	KR20	KR20	KR19
	KR27	KR27	KR26
	KR53	KR24	KR53
			KR24



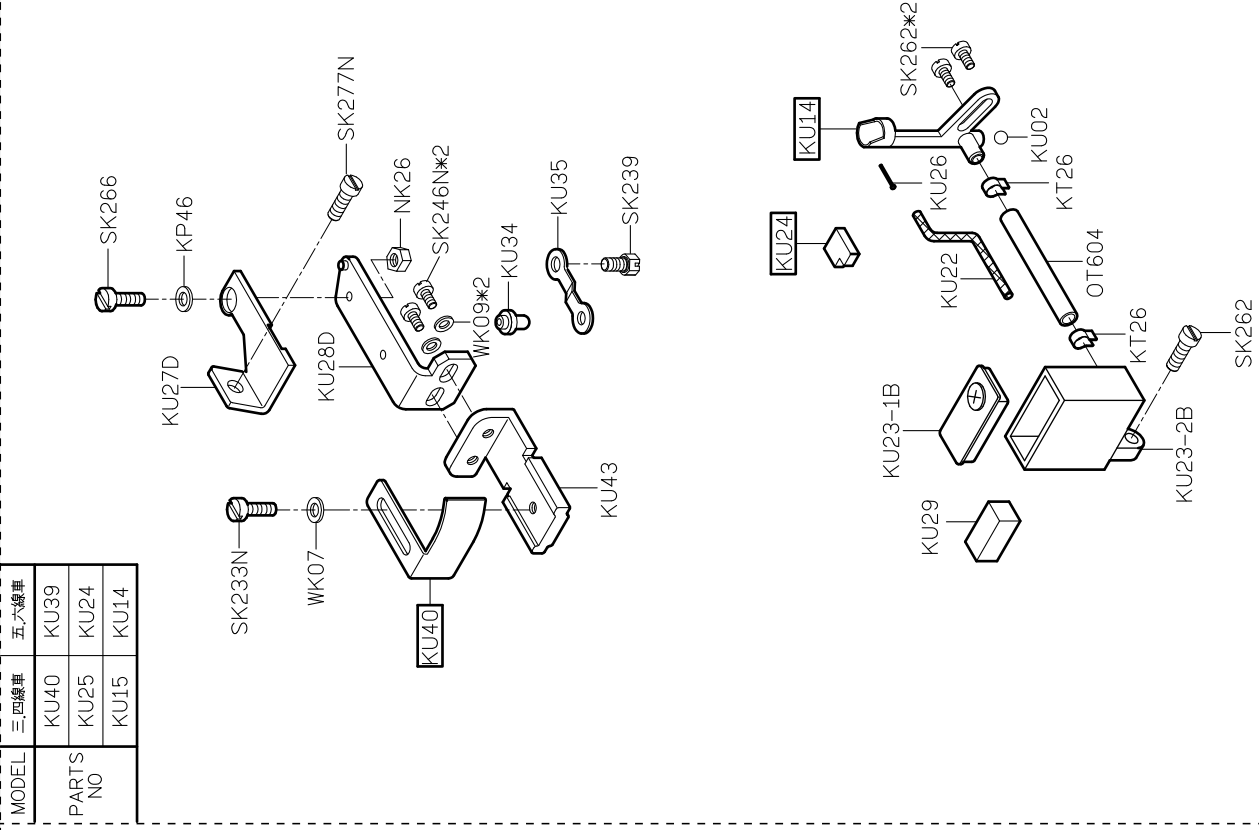
## PARTS LIST FOR KR GROUP

## PARTS LIST FOR KS GROUP

# PARTS LIST FOR KT GROUP

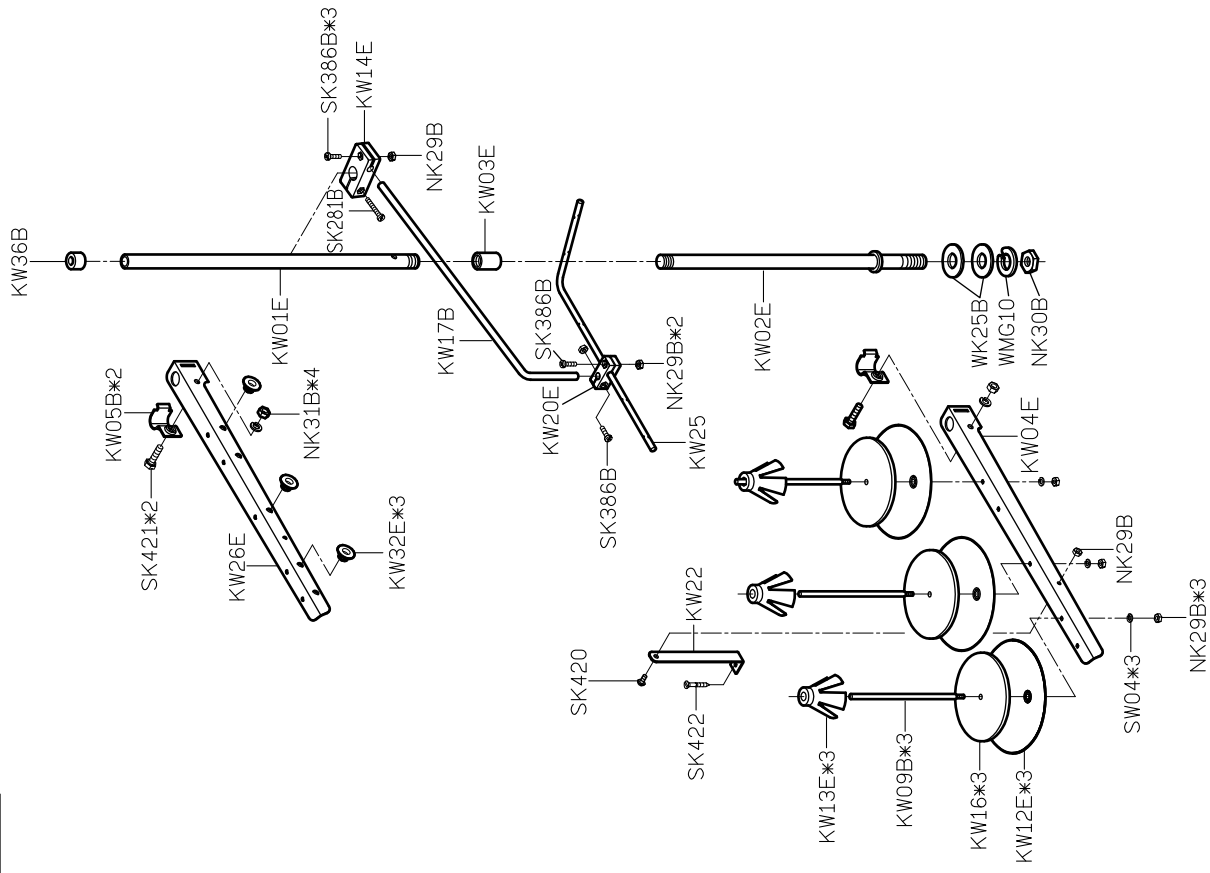


# PARTS LIST FOR KU GROUP

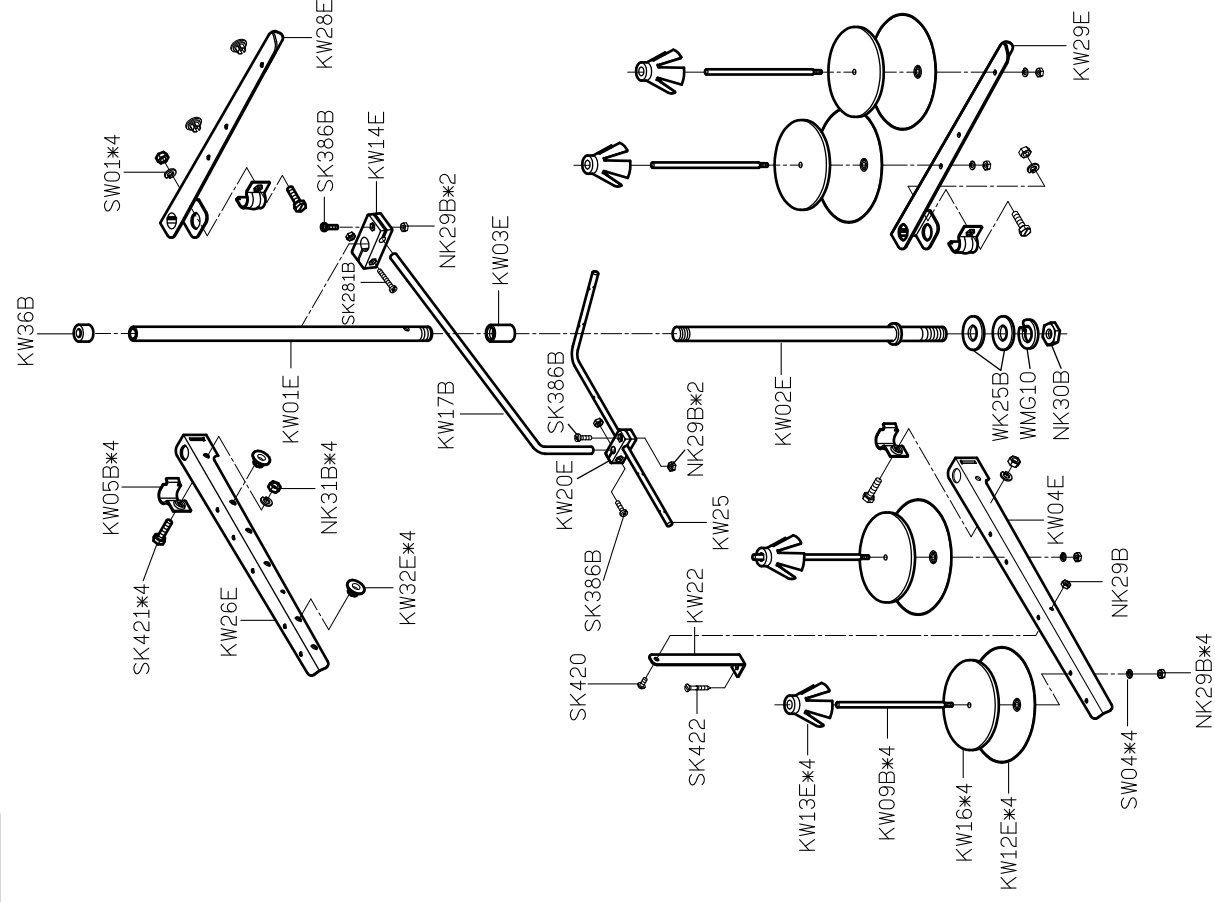


MODEL	三、四線車	五、六線車
PARTS NO	KU40	KU39
	KU25	KU24
	KU15	KU14

KW40E-3

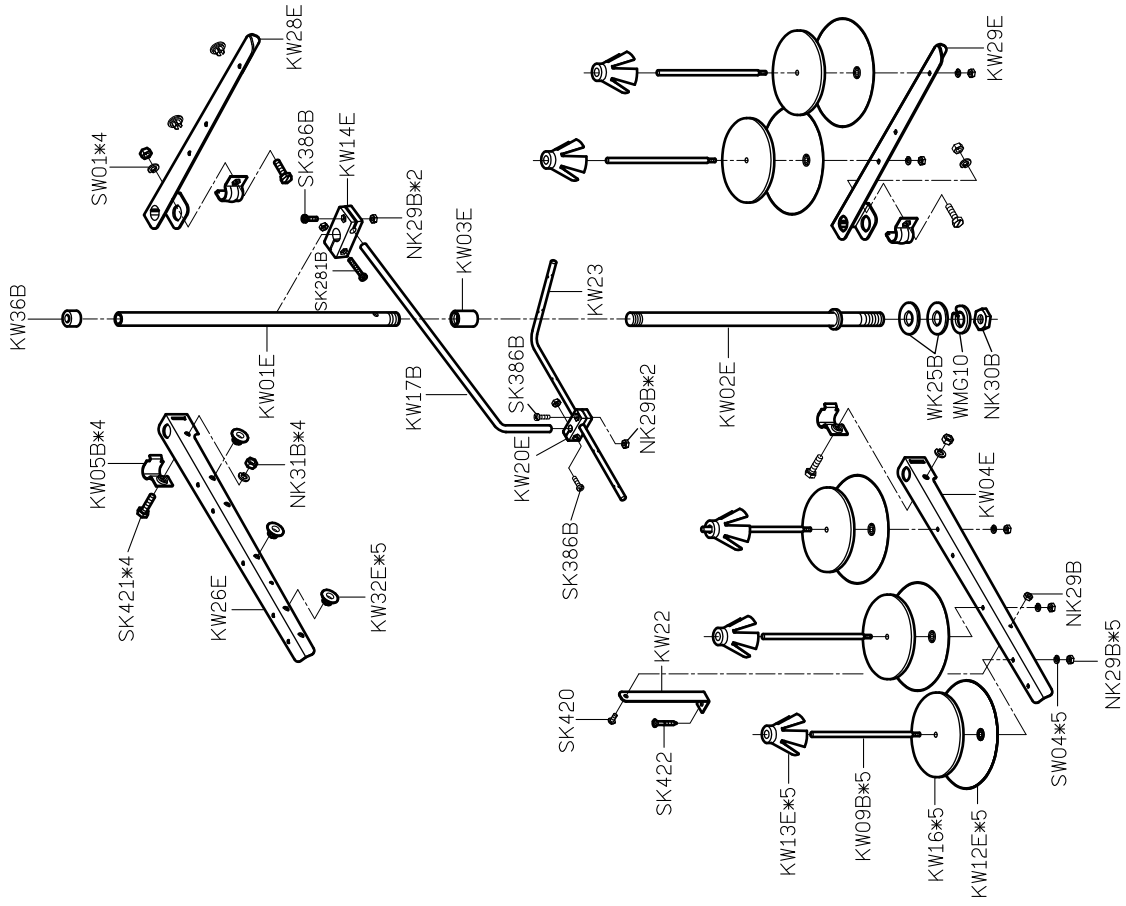


KW40E-4



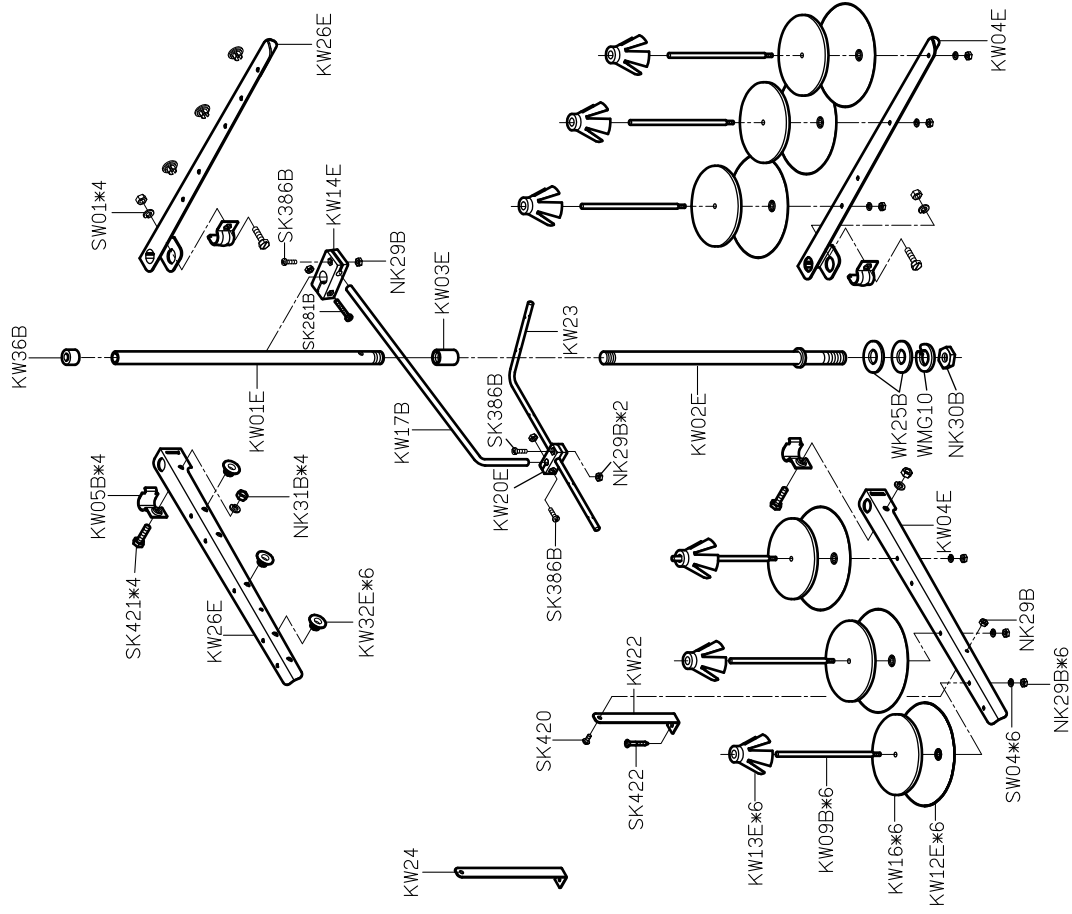
PARTS LIST FOR KW GROUP

KW40E-5

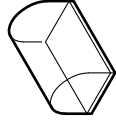


PARTS LIST FOR KW GROUP

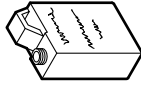
KW40E-6



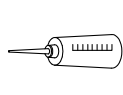
KY01  
防塵罩



KY02-A  
油罐



KY03  
油壺



KY04  
漏斗



KY05  
油壺



KY07  
開口板手



KY08  
開口板手



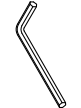
KY09  
開口板手



KY10  
六角板手



KY11  
六角板手



KY12  
六角板手



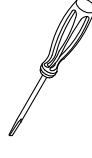
MY14  
內六角螺絲起子



KY16  
一字起子



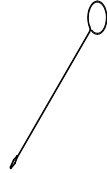
KY17  
一字起子



KY18  
鑷子



KY19  
穿線器



KY20D  
腳踏板



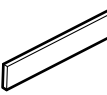
KY21-A/MY21  
鉤子/鍊條



KY26F  
工具袋



KR35  
下刀片



KT14-A  
濾油器



KZ03  
乾燥濟



針\*5  
車針



MY11  
六角板手



KZ08Q  
使用說明書



KZ08D-2  
零件圖



SK216\*2  
螺絲



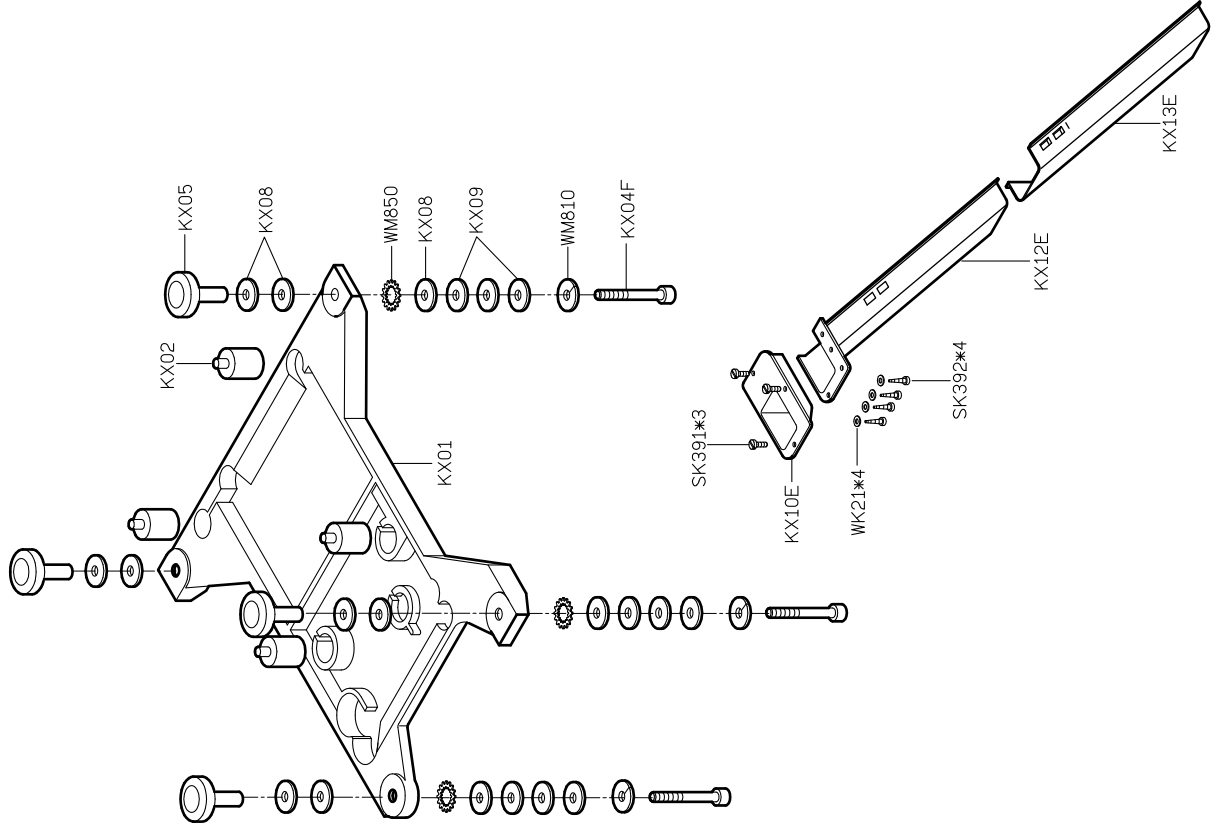
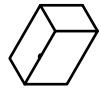
KC121-E  
燈座電氣組



SK392\*2  
螺絲



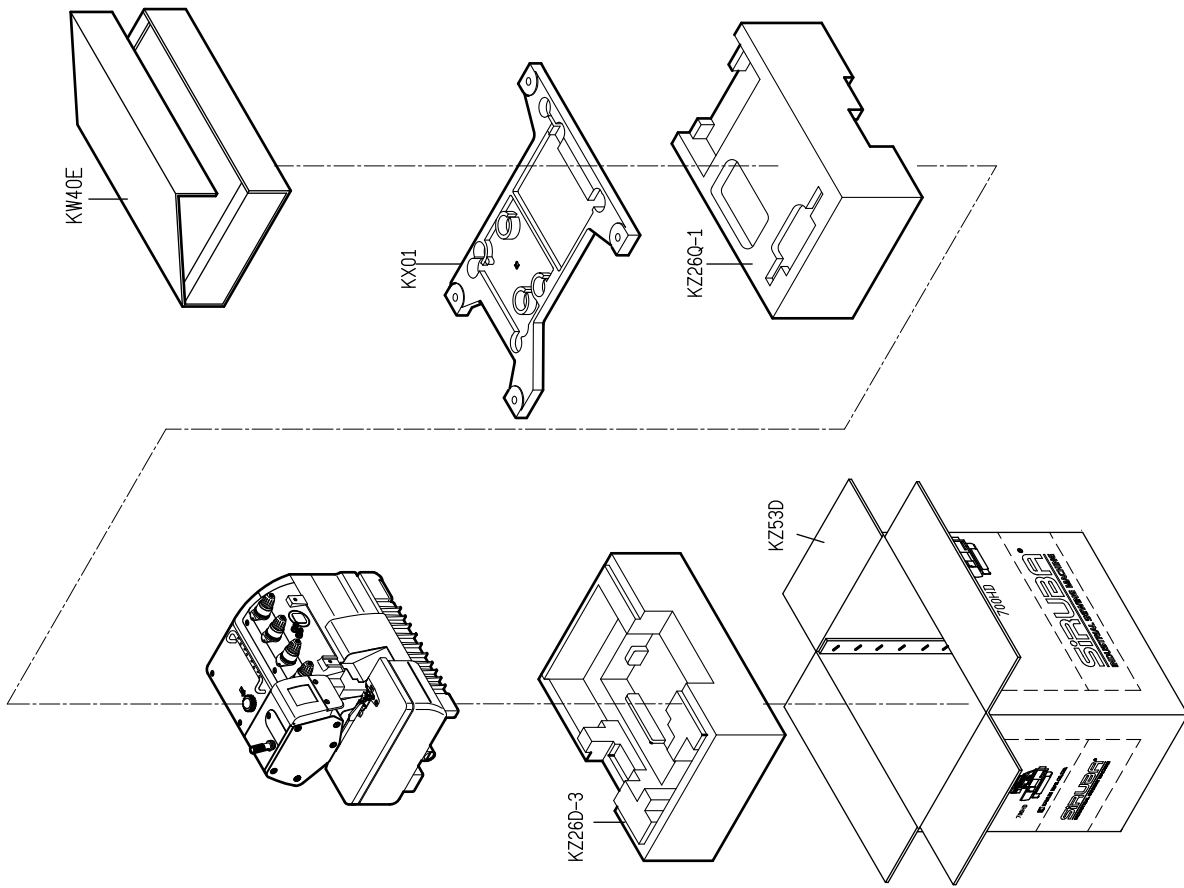
KC146  
照明電源開關包裝盒



PARTS LIST FOR KX GROUP

PARTS LIST FOR KY GROUP







# 700HD

高林股份有限公司 KAULIN MFG. CO., LTD.